

- ER-Model → Rel. Schema

- Entity Types → Tables
= Classes

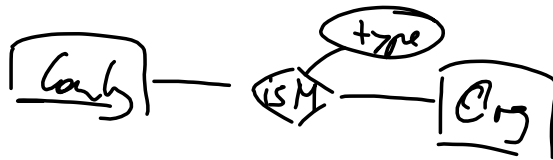
Attributes → Columns

- Relationship → generate 1:n tables
n:m → generate n:m table

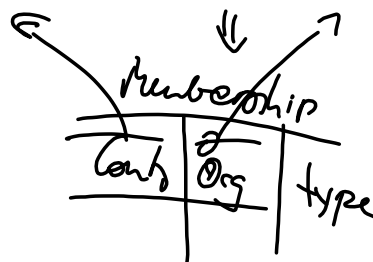
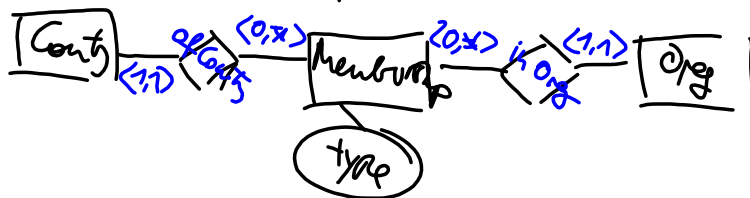


Jul 12-10:11

relationships with attrs



↳ Refinement



Jul 12-10:26

ER-dignan : class-centered view
 (cities have name, area, ...)

Ontology :: class-hierarchy

- Properties : domain, range

name : is an nbr. of city, city, nber...
 $\Rightarrow \cup \Rightarrow owl:Thing?$
 \rightarrow restrict to actual domain

Jul 12-10:30

Mountain er:isa er:ConcreteClass.
 \rightarrow er:isa a owl:AnnotationProperty

Mountain er:isa er:AbstractClass

Line er:isa { er:AbstractClass
 { er:Interface

Jul 12-10:44

is name on Conty functional?
 is locOnIsland on City functional?
 is " " " " functional?

~~(City)~~ $\exists \leq 1$ locOnIsland.T \Rightarrow City? No
 (M+T) $\exists \leq 1$ locOnIsland.T \Rightarrow Markin? YES

Jul 12-11:08

Select name, island, isname
 from city, locOnIsland, Island
 Where city.name = locOnIsland.island
 and locOnIsland.island = i.name
 \Rightarrow "London", <... GB>

Annotations:
 RCTAS (red)
 MD (blue)
 Search Thing (blue)
 i.name (red)

Jul 12-11:31